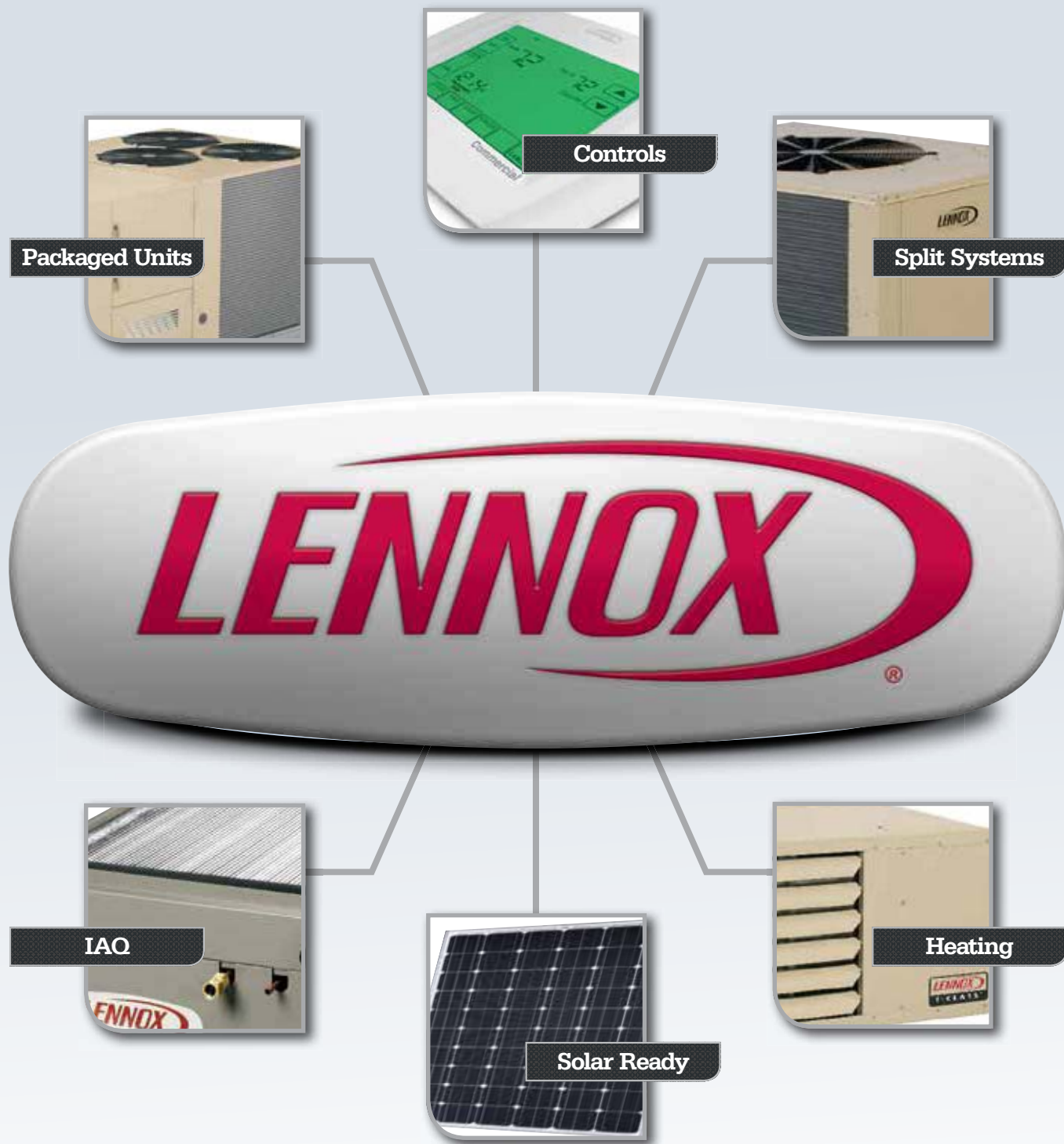


# 2015 | COMMERCIAL HVAC PRODUCT GUIDE



# Welcome to a new era of ultra

We've expanded our best commercial HVAC line to include units that deliver ultra innovation on all counts. Ultra-high efficiency is just the beginning. Ultra-high efficiency models are available from 7.5-tons to 20-tons.



Industry's highest efficiency of 21.5 IEER

Sound rating as low as 81 dBA

Up to 42% lighter than competitive units



## Ultra-high efficiency

The efficiency ratings achieved by the new Energence® units exceed ASHRAE 90.1-2010 IEER minimum standards by as much as 92%.

## Ultra-lightweight design

New Energence units are packed with intelligent features, yet are up to 42% lighter\* in weight than many leading competitors' units, eliminating concerns and potential costs involving a building's structural integrity.

## Ultra-quiet performance

The Advanced Cooling System, DirectPlus™ blower system and ECM outdoor fans help reduce outdoor sound levels to the lowest in the industry—as low as 81 dBA, making them ideal for buildings that require low indoor sound, such as theaters.



## Ultra-intelligent controls

A smart idea that keeps getting smarter, the Prodigy® Control System has new display enhancements that make monitoring and controlling the system easier than ever.

- Wider viewing area for more intuitive flow of information
- Help button with menu-specific content to simplify operation and troubleshooting
- Clearly labeled scroll and adjustment buttons to facilitate accurate setup



Packaged Units Pg. 4



Solar Ready Pg. 6



Split Systems Pg. 8



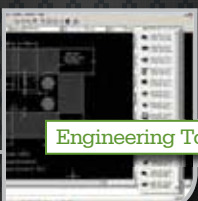
Heating Units Pg. 10



Indoor Air Quality Pg. 12



Commercial Controls Pg. 14



Engineering Tools Pg. 18

\*In 7.5- to 12.5-ton range.

# Raider® and Landmark® rooftop units, available in new models for a wider range of applications

From the readily available Raider® rooftop units to the highly durable Landmark® line with a choice of customizable options, Lennox has the units to fit your needs. Many models eliminate the need for an adaptor curb to help you save time and effort, and stay competitive.



**RAIDER®**



**LANDMARK®**

## Raider®

### Value Without Compromise®

With the expansion of the Raider® rooftop unit line, Lennox delivers value and convenience, without compromising on quality.

- New 7.5- to 10-ton heat pump units
- New 14 SEER models available to meet Regional Standard regulations
- Compatible with many replacement installations, eliminating the need for an adaptor curb
- Can result in up to \$1,500 savings on replacement projects<sup>3</sup>
- Available at every Commercial distribution location and select Lennox PartsPlus® stores

## Landmark®

### Performance Marked by Flexibility™

Additions to the Landmark rooftop product family make it an even better choice for any application.

- Landmark product family offers efficiency options on 2- to 25-ton units
- New 2- to 5-ton 14 SEER gas/electric, electric/electric, and heat pump units meet or exceed the 2015 Regional Standard regulations
- Factory- or field-installed BACnet® option allows total automation, and helps buildings run more efficiently, safely and securely
- The Environ Coil System on Landmark is now offered in 2- to 25-ton gas/electric and electric/electric units



*Get answers in seconds,  
quotes in minutes and  
replacement equipment now.*

*Call 1-877-792-0024*

*Sign up for rewards at [LennoxRapidReplacement.com](http://LennoxRapidReplacement.com)*

# A complete line of light-commercial rooftop units



Saving Energy with Intelligence®

## LANDMARK®



Performance Marked by Flexibility™

### Energence® Rooftop Units

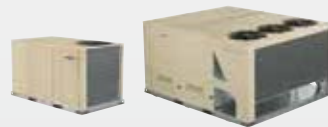
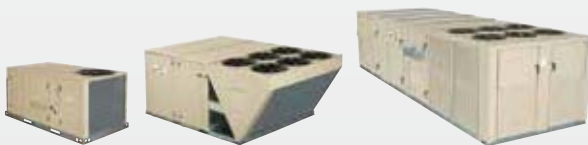
*The Industry's Most Efficient Rooftop Unit*

- 3- to 50-ton gas/electric and electric/electric units
- Ultra-high-efficiency models exceed ASHRAE 90.1-2010 IEER minimum by up to 92%
- Industry-leading Prodigy® Control System provides fast, accurate setup and simplified operation
- Available interoperability via certified BACnet® or LonTalk® modules
- Extensive factory options and accessories are available with over 3 million possible factory configurations
- Available MSAV® (Multi-Stage Air Volume) supply fan achieves up to 83% fan power savings; DirectPlus™ system improves performance and eliminates the need for a variable frequency drive
- SmartAirflow® system continuously adjusts the economizer dampers to provide precise ventilation per the building's design requirements, saving an average of 35% ventilation energy savings
- Environ™ Coil System helps maximize reliability and sustainability
- The only commercial HVAC system to integrate directly with solar power for an effective efficiency up to 34 SEER, 43 IEER and beyond<sup>3</sup>
- Improved comfort with optional patented Humiditrol® dehumidification system

### Landmark® Rooftop Units

- 2- to 25-ton standard-efficiency gas/electric and electric/electric units
- 7.5- to 25-ton high-efficiency gas/electric and electric/electric units
- 2- to 20-ton heat pump units
- Standard and high-efficiency units available
- Available MSAV supply fan achieves up to 61% fan power savings
- Over 30 features designed to reduce installation and service time
- Isolated compressor compartment and slide-out blower are standard
- Meets a variety of applications with over 100 field accessories
- Environ Coil System helps maximize reliability and sustainability
- Integration with BACnet, the most popular building automation protocol
- Available through Lennox commercial distribution facilities and select Lennox PartsPlus® stores

Rooftop Units



#### Efficiency Rating:

Up to 18.0 SEER, 13.9 EER and 21.5 IEER<sup>1</sup>

#### Warranty:

- 15-Year Limited Warranty** on stainless steel gas heat exchanger
- 10-Year Limited Warranty** on aluminized gas heat exchanger
- 5-Year Limited Warranty** on compressor
- 3-Year Limited Warranty** on Prodigy unit controller
- 3-Year Limited Warranty** on Environ Coil System
- 1-Year Limited Warranty** on covered components

#### Efficiency Rating:

Up to 13.0 SEER, 12.7 EER and 14.5 IEER

#### Warranty:

- 15-Year Limited Warranty** on stainless steel gas heat exchanger
- 10-Year Limited Warranty** on aluminized steel gas heat exchanger
- 5-Year Limited Warranty** on compressor
- 3-Year Limited Warranty** on Environ Coil System
- 1-Year Limited Warranty** on covered components

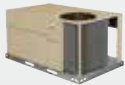
# RAIDER®



Value Without Compromise®

## Raider® Rooftop Unit

- 3- to 12.5-ton gas/electric and electric/electric units
- 3- to 10-ton heat pump units
- Award-winning factory conducts over 200 quality checkpoints
- Footprint is compatible with 20+ years of existing units, eliminating cost of adaptor curb
- Matches existing electrical and plumbing connections on many existing applications
- Weighs up to 18% less than units in its class
- Environ™ Coil System helps maximize reliability and sustainability
- Immediate availability through Lennox commercial distribution facilities and select Lennox PartsPlus® stores



### Efficiency Rating:

14.0 SEER, up to 11.5 EER and 13.2 IEER

### Warranty:

**10-Year Limited Warranty** on aluminized gas heat exchanger

**5-Year Limited Warranty** on compressor

**3-Year Limited Warranty** on Environ Coil System

**1-Year Limited Warranty** on covered components

# STRATEGOS®

COMMAND EFFICIENCY



Command Efficiency

## Strategos® Rooftop Units

- 3- to 24-ton gas/electric and electric/electric units
- Among the most energy-efficient rooftop units in the industry<sup>4</sup>
- Industry-leading Prodigy® Control System provides fast, accurate setup and simplified operation
- Standard MSAV® supply fan achieves up to 75% fan power savings
- Available interoperability via certified BACnet® or LonTalk® modules
- Standard features such as GFI service outlet, circuit breaker and swing-out economizer hood
- Factory-tested and configured to further simplify installation and start-up
- Environ Coil System helps maximize reliability and sustainability



### Efficiency Rating:

Up to 16.1 SEER, 14.3 EER and 16.8 IEER

### Warranty:

**15-Year Limited Warranty** on stainless steel gas heat exchanger

**10-Year Limited Warranty** on aluminized steel gas heat exchanger

**5-Year Limited Warranty** on compressor

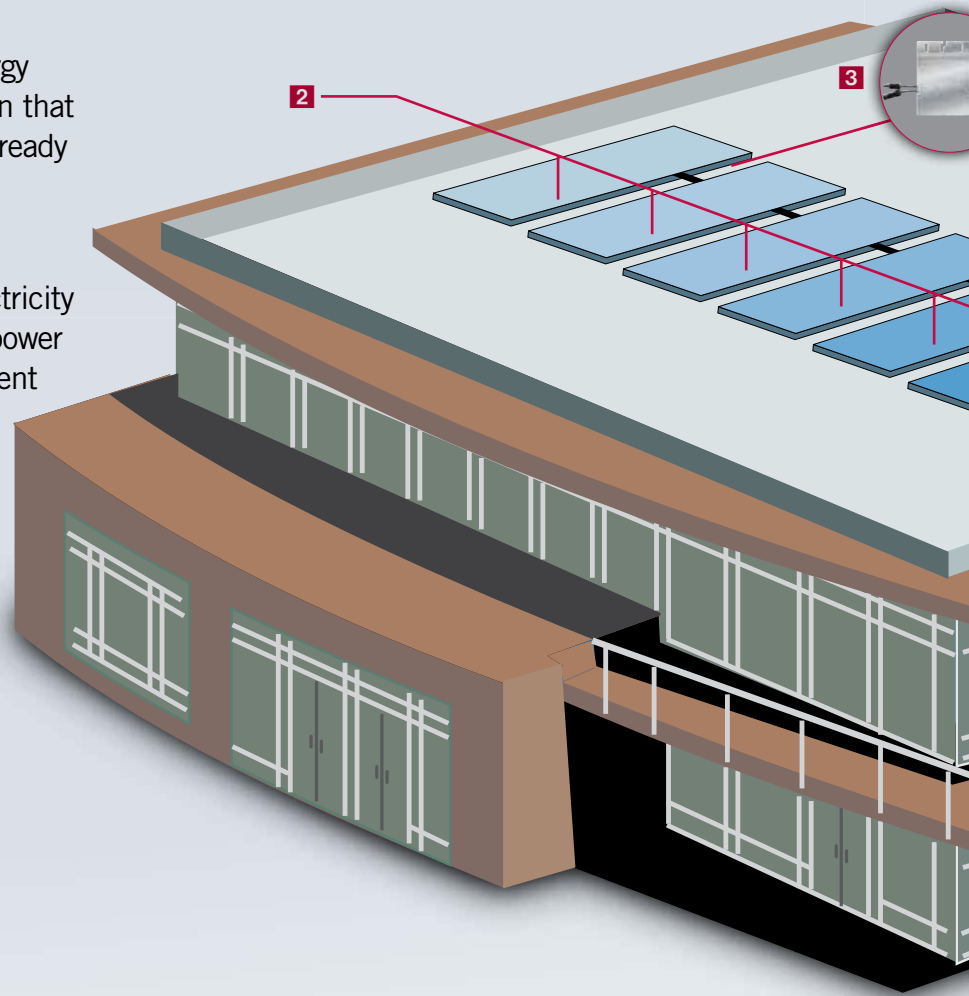
**1-Year Limited Warranty** on covered components

## Solar power for commercial HVAC

The SunSource® Commercial Energy System is a whole-building solution that uses solar energy to power a solar-ready Energence® premium rooftop unit.

The solar modules are connected directly to the rooftop unit, so electricity generated from the modules can power the rooftop unit and other equipment or appliances in the building. The power can also be sent back to the electricity grid, enabling the building owner to receive credit for unused power.

The SunSource system can help a building reduce its dependence on the power grid during peak load times, which can help reduce demand charges that are incurred year-round.



### 1 Solar-Ready Energence® rooftop unit

Energence® premium 3- to 12.5-ton rooftop units are available solar ready, so it is quick and easy to integrate a solar HVAC system to the building. Already among the industry's efficiency leaders, Energence units can achieve an effective efficiency of up to 34 SEER, 43 IEER and beyond<sup>2</sup> when the SunSource® system is integrated with the rooftop unit.



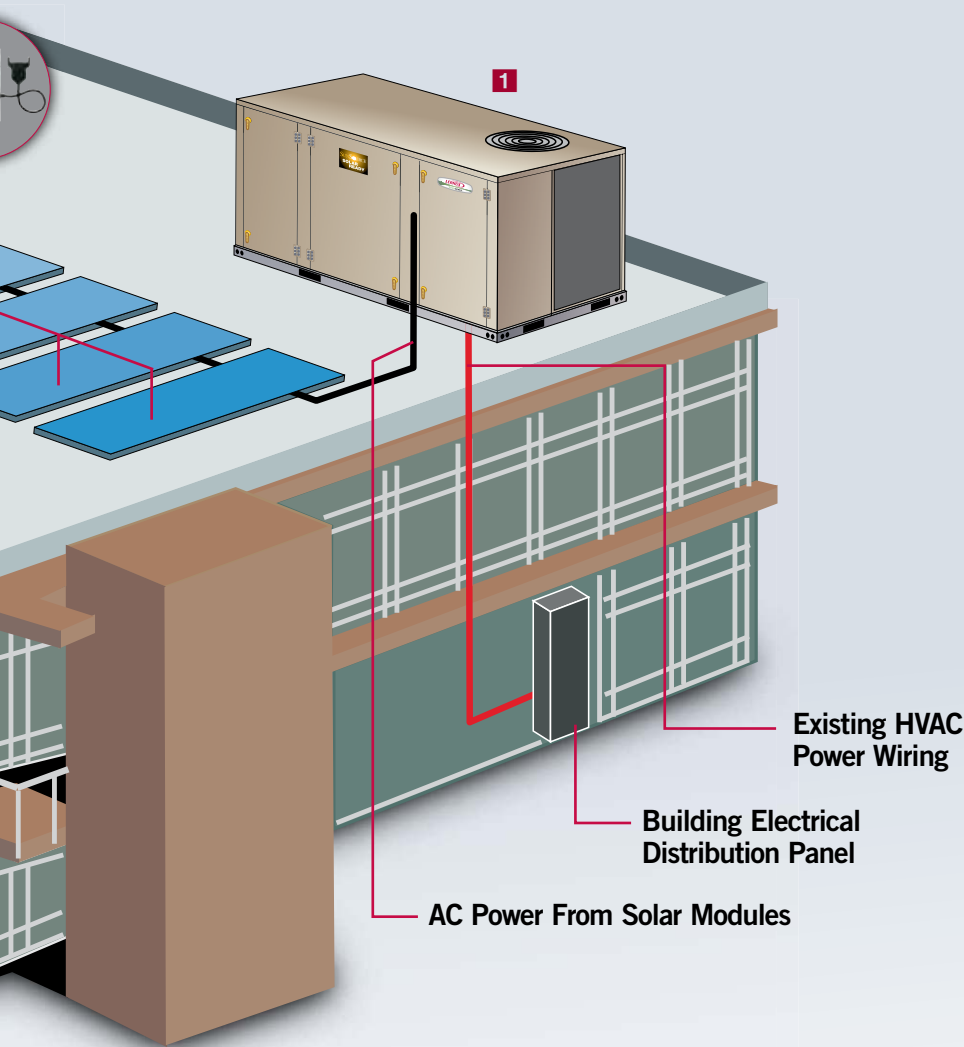
### 2 Solar modules

The SunSource system uses up to 24 solar modules per rooftop unit. The solar modules feature a fully integrated plug-and-play system, making them easier to install than ever before. The modular design of the SunSource system allows additional solar modules to be installed at any time, and no system redesign is required.



### 3 Microinverters

Each solar module uses a microinverter to convert DC power harnessed by the panels to AC power, which is then sent to the rooftop unit. The microinverter system is more efficient and reliable than traditional single-inverter systems. In a single-inverter system, if one solar module fails, all modules in the system are affected and system performance drops. With the SunSource system, if one solar module fails or does not perform to its maximum capacity, output from the rest of the solar modules is not affected.



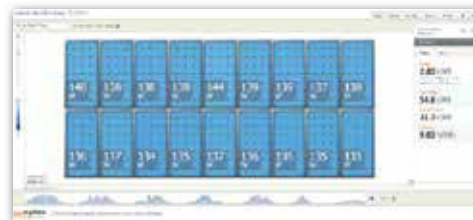
## The perfect way to go green

The SunSource system and the solar-ready Emergence rooftop units can help meet ASHRAE Green Standard 189.1 for high-performance green buildings and help meet the LEED® EAC2 On-Site Renewable Energy Credit.



## Communication module

The communication module allows online monitoring of system status, energy production and environmental benefits in real time. This data is sent from each solar module through the power lines inside the building, where it is collected by the communication module.



## Monitoring website

The system will automatically monitor and analyze the solar performance 24 hours a day, 7 days a week. Viewable on a secure website, this gives a detailed picture of the SunSource system's environmental impact and energy savings.

# Superior engineering and durable design help achieve low

## Air conditioners and heat pumps



### S-Class® 3- to 5-Ton Air Conditioners and Heat Pumps

- Superior energy efficiency
- Compatible with the Humiditrol® dehumidification system which helps reduce moisture and control the spread of airborne contaminants
- 2-stage scroll compressor
- Operates as quietly as 74 dB
- SmartHinge™ louvered coil protection allows access to interior components on all sides



### T-Class™ 3- to 5-Ton Air Conditioners and Heat Pumps

- Standard- and high-efficiency units
- Compatible with the Humiditrol dehumidification system which helps reduce moisture and control the spread of airborne contaminants
- Scroll compressor and other high-quality components
- Operates as quietly as 76 dB

#### Efficiency Rating:

Up to 16.5 SEER and 9.5 HSPF

#### Warranty:

- 5-Year Limited Warranty on compressor
- 1-Year Limited Warranty on covered components



#### Efficiency Rating:

Up to 16.0 SEER and 9.7 HSPF

#### Warranty:

- 5-Year Limited Warranty on compressor
- 1-Year Limited Warranty on covered components

## Indoor coils



### CX34, CX35 Indoor Coils

- 1.5- to 5-ton capacities
- Upflow, full-cased models
- Large face area for high-efficiency operation
- Copper-ribbed tubing and enhanced aluminum fins improve heat transfer
- Non-corrosive, UV-resistant polymer drain pan with dual drain connections
- CX35 is all aluminum with aluminum tube and fin
- Minimal air resistance for better performance

#### Warranty:

- 1-Year Limited Warranty on covered components

## Air handlers



### CBX40UHV Air Handler

- 2- to 5-ton capacities
- Excellent match with high-efficiency S-Class or T-Class outdoor units
- Factory-installed MERV 16 filtration for cleaner, healthier indoor air
- 2-part cabinet construction for installation in tight applications
- Slide-out supply fan for quick and easy maintenance
- Multi-position cabinet with upflow/horizontal or downflow available
- Toolless filter access for quick filter replacement
- Voltage—available in 230/1/60
- Electric heat options—available in 230/1/60 and 230/3/60



### CBX32M/MV Air Handlers

- 1.5- to 5-ton capacities
- 2-part cabinet construction for installation in tight applications
- Slide-out supply fan for quick and easy maintenance
- Multi-position cabinet with upflow/horizontal or downflow configuration
- Multiple blower speeds help provide precise comfort control
- Toolless filter access for quick filter replacement
- Voltage options—CBX32MV available in 230/1/60; CBX32M available in 230/1/60, 460/1/60 and 575/1/60
- Electric heat options—CBX32MV available in 230/1/60, 230/3/60; CBX32M available in 230/1/60, 230/3/60, 460/3/60 and 575/3/60



### CBX27UH Air Handlers

- 1.5- to 5-ton capacities
- High-static performance for all air conditioners and heat pumps
- 2-part cabinet construction for installation in tight applications
- Slide-out supply fan for quick and easy maintenance
- Dedicated upflow/horizontal configuration with optional downflow kit, field conversion
- Toolless filter access for quick filter replacement
- Voltage options—available in 230/1/60, 460/1/60 and 575/1/60
- Electric heat options—available in 230/1/60, 230/3/60, 460/3/60 and 575/3/60

#### Warranty:

- 1-Year Limited Warranty on covered components and units

#### Warranty:

- 1-Year Limited Warranty on covered components and units

#### Warranty:

- 1-Year Limited Warranty on covered components and units



# lifecycle costs



## Nitrogen-Charged Air Conditioners and Heat Pumps

- 3- to 5-ton capacities
- High-efficiency scroll compressor
- Nitrogen-charged for replacement of R22 components only
- Operates as quietly as 76 dB

### Efficiency Rating:

13.0 SEER

### Warranty:

**5-Year Limited Warranty**  
on compressor

**1-Year Limited Warranty**  
on parts



## T-Class 6- to 20-Ton Air Conditioners and Heat Pumps

- 6- to 20-ton air conditioners
- 7.5-, 10- and 15-ton twinned heat pumps
- Easy access to compressors and service valves
- Corner control panels with DDC expansion space

### Efficiency Rating:

Up to 11.7 EER

### Warranty:

**5-Year Limited Warranty**  
on compressor

**1-Year Limited Warranty**  
on covered components



## C33, C35, CR33, CH33, CH23 Indoor Coils

- 1.5- to 5-ton capacities
- Uncased (C33) and full-cased models
- Cased models with all aluminum design—aluminum tube and fin (C35)
- Upflow configuration (C33)
- Horizontal configuration (CH33 and CH23)
- Downflow configuration (CR33)
- Large face area for high-efficiency operation
- Copper-rifled tubing and enhanced aluminum fins improve heat transfer
- Long-lasting, painted, galvanized cabinet and plastic drain pans
- Minimal air resistance for better performance

### Warranty:

**1-Year Limited Warranty**  
on covered components



## CBX25UH Air Handlers

- 1.5- to 5-ton capacities
- Economical match for T-Class air conditioners and heat pumps
- Multiple blower speeds help provide precise comfort control
- Dedicated upflow/horizontal configuration with optional downflow kit, field conversion
- High-quality components and design for great reliability and performance
- Voltage and electric heat—available in 230/1/60



## T-Class TAA Air Handlers

- 6- to 20-ton capacities
- Great match for T-Class 6- to 20-ton air conditioners and heat pumps
- Quick and easy installation with knock-out access to internal refrigerant lines on either end of the unit
- MSAV® supply fan option provides year-round savings and comfort
- Low-maintenance drive belt tensioning device provides longer belt life and quick belt replacement
- Factory-installed motor and drive kits in standard-, low- and high-static configurations
- Voltage and electric heat options—available in 230/3/60, 460/3/60 and 575/3/60

### Warranty:

**1-Year Limited Warranty**  
on covered components and units

### Warranty:

**1-Year Limited Warranty**  
on covered components and units

# Minimize energy use and maximize comfort with Lennox®

## Furnaces



The quietest, most efficient furnace you can buy.<sup>5</sup>

### SLP98V Gas Furnaces

- 66,000–132,000 Btuh
- 33" design profile
- Variable-capacity operation
- SilentComfort® technology
- Precise Comfort® and AirFlex™ technologies
- Upflow/horizontal and dedicated downflow configurations
- Reliable SureLight® igniter
- Multi-speed, direct-drive, slide-out blower and toolless entry for quick maintenance

#### Efficiency Rating:

Up to 98.7% AFUE energy efficiency

#### Warranty:

**10-Year Limited Warranty** on heat exchanger  
**1-Year Limited Warranty** on covered components



The most quiet furnace in its class!<sup>6</sup>

### SL280V Gas Furnaces

- 66,000–132,000 Btuh
- 33" design profile
- 2-stage variable speed operation
- SilentComfort technology
- Upflow/horizontal or dedicated downflow models available
- Reliable SureLight igniter
- Multi-speed, direct-drive, slide-out blower and toolless entry for quick maintenance

#### Efficiency Rating:

80% AFUE energy efficiency

#### Warranty:

**10-Year Limited Warranty** on heat exchanger  
**1-Year Limited Warranty** on covered components



High-efficiency, variable speed

### EL296V/EL296E Gas Furnaces

- 44,000–132,000 Btuh
- 33" design profile
- 2-stage gas heating for improved comfort control
- Upflow/horizontal or dedicated downflow models available
- Constant-torque Power Saver™ technology (EL296E only) increases system efficiency
- Expanded venting options
- Sealed blower compartment
- Reliable SureLight igniter
- Multi-speed, direct-drive, slide-out blower and toolless entry for quick maintenance

#### Efficiency Rating:

96% AFUE energy efficiency

#### Warranty:

**10-Year Limited Warranty** on heat exchanger  
**1-Year Limited Warranty** on covered components



Consistent temperature with 2-stage heating

### EL280 Gas Furnaces

- 66,000–132,000 Btuh
- 2-stage heating for improved comfort control
- Upflow/horizontal or dedicated downflow models available
- Sealed blower compartment
- Reliable SureLight igniter
- Direct-drive, slide-out blower and toolless entry for quick maintenance

#### Efficiency Rating:

80% AFUE energy efficiency

#### Warranty:

**10-Year Limited Warranty** on heat exchanger  
**1-Year Limited Warranty** on covered components

## Unit heaters and duct furnaces



### T-Class™ Separated Combustion Unit Heaters

- Heating capacities from 45,000–300,000 Btuh
- Compact cabinet design on 45,000 Btuh model
- Ideal for hard-to-heat applications where excessive dust, dirt, humidity or negative pressure is a concern
- Durable tubular heat exchanger
- Hinged door allows easy access to components
- Stainless steel heat exchanger is available for longer product life
- Sidewall venting eliminates roof penetrations
- Self-diagnostic board with LED display improves troubleshooting efficiency and accuracy
- Available for natural gas or propane
- Complies with ASHRAE 90.1-2013

#### Efficiency Rating:

Up to 82% thermal efficiency

#### Warranty:

**15-Year Limited Warranty** on stainless steel heat exchanger  
**10-Year Limited Warranty** on aluminized heat exchanger  
**1-Year Limited Warranty** on covered components



Single-stage,  
high-efficiency

## EL195E Gas Furnaces

- 44,000–132,000 Btuh
- 33" design profile
- Single-stage gas heating
- Upflow/horizontal or dedicated downflow models available
- Constant-torque Power Saver™ technology increases system efficiency
- Fully insulated for quiet, efficient operation
- Reliable SureLight® igniter
- Multi-speed, direct-drive, slide-out blower and toolless entry for quick maintenance

### Efficiency Rating:

95% AFUE energy efficiency

### Warranty:

**10-Year Limited Warranty**  
on heat exchanger

**1-Year Limited Warranty**  
on covered components



## EL180E Gas Furnaces

- 44,000–132,000 Btuh
- 33" design profile
- Upflow/horizontal or dedicated downflow models available
- Constant-torque Power Saver technology increases system efficiency
- Sealed blower compartment
- Direct-drive, slide-out blower and toolless entry for quick maintenance

### Efficiency Rating:

80% AFUE energy efficiency

### Warranty:

**10-Year Limited Warranty**  
on heat exchanger

**1-Year Limited Warranty**  
on covered components



## ML193/ML195 Gas Furnaces

- 44,000–132,000 Btuh
- 33" design profile
- Direct-vent or non-direct-vent for flexible installation
- Silicone nitride ignitor delivers starting reliability
- Upflow/horizontal or dedicated downflow models available
- Multi-speed, direct-drive, slide-out blower and toolless entry for quick maintenance

### Efficiency Rating:

Up to 95% AFUE energy efficiency

### Warranty:

**10-Year Limited Warranty**  
on heat exchanger

**1-Year Limited Warranty**  
on covered components



## ML180 Gas Furnaces

- 44,000–132,000 Btuh
- 33" design profile
- Upflow/horizontal or dedicated downflow models available
- Sealed blower compartment
- Direct-drive, slide-out blower and toolless entry for quick maintenance

### Efficiency Rating:

80% AFUE energy efficiency

### Warranty:

**10-Year Limited Warranty**  
on heat exchanger

**1-Year Limited Warranty**  
on covered components



## LF24 Unit Heaters

- 30,000–390,000 Btuh
- Use in a wide range of industrial and commercial applications
- Excellent for warehouses, automobile repair facilities and public garages
- Available for natural gas or propane
- Complies with ASHRAE 90.1-2013

### Efficiency Rating:

Up to 81% thermal efficiency

### Warranty:

**15-Year Limited Warranty**  
on stainless steel heat exchanger

**10-Year Limited Warranty**  
on aluminized heat exchanger

**1-Year Limited Warranty**  
on covered components



## LD24 Duct Furnaces

- 75,000–300,000 Btuh
- Compact cabinet allows for versatile installation
- Gas-fired
- Durable tubular heat exchanger
- High-quality aluminized steel inshot burners
- Self-diagnostic board with LED display improves troubleshooting efficiency and accuracy
- Electronic ignition
- Complies with ASHRAE 90.1-2013

### Efficiency Rating:

80% thermal efficiency

### Warranty:

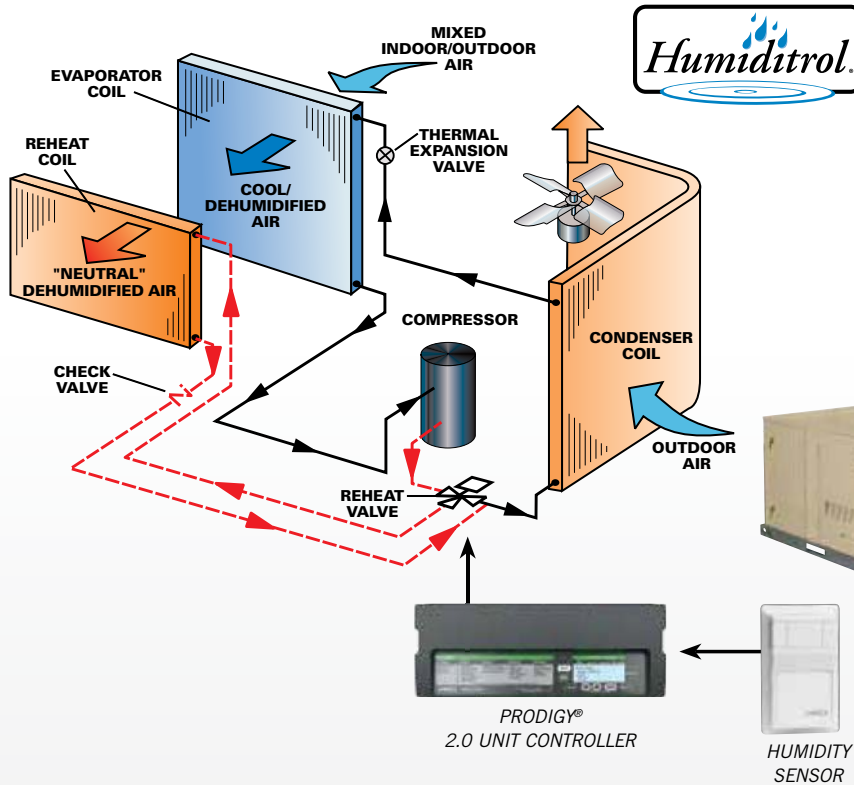
**15-Year Limited Warranty**  
on stainless steel heat exchanger

**10-Year Limited Warranty**  
on aluminized heat exchanger

**1-Year Limited Warranty**  
on covered components

Lennox offers a wide range of superior products to help improve indoor air quality in commercial buildings. Our dehumidification-on-demand design removes moisture based on relative humidity levels—not the temperature—so it's easy and efficient to create a better indoor environment.

## Humidity control



### Humiditrol® Dehumidification System for Rooftop Units

- The Humiditrol® system removes up to 8 times more moisture than standard rooftop units!<sup>7</sup>
- Excellent humidity control in the toughest applications such as mild-temperature, high-humidity days
- Allows humidity control independent of cooling
- Meets ASHRAE 62.1-2007 fresh-air requirements
- Enhanced dehumidification available on Emergence® rooftop units



Indoor Air Quality

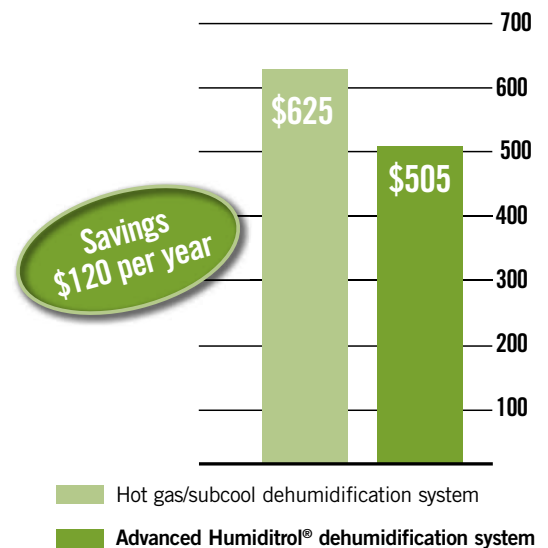


### Humiditrol Dehumidification System for Split Systems

- Precise humidity control for split systems that maintains ASHRAE 62.1-2007 fresh-air requirements
- This secondary coil is installed downstream of the evaporator, now available as a field-installed accessory
- Better control by activating dehumidification cycle based on humidity levels, not temperature
- Patented reheat design helps control the growth of mold, mildew and dust mites for unmatched indoor air quality
- Requires only the addition of iComfort WiFi® touchscreen thermostat\* and Lennox® variable speed furnace or air handler

\*Select units will also require the Equipment Interface Module.

### Energy Cost/Year



Calculations based on 1,460 hours of dehumidification per year on 5-ton rooftop unit. Energy cost estimated at \$0.13 per kWh.

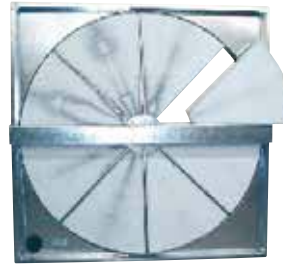
Fresh-air accessories for rooftop units use advanced technology to improve ventilation and increase the energy efficiency of HVAC systems.

## Ventilation



### Energy Recovery System

- 300–6,200 CFM
- Available with most rooftop units
- Enthalpy wheel transfers heat and moisture
- ARI-certified energy recovery wheels
- Patented pivoting wheel option for full economizer operation
- Barometric relief dampers standard
- Balancing dampers standard on fixed-wheel models
- Fully insulated, galvanized cabinet
- ETL-certified
- Energy recovery wheel is segmented for easy cleaning and removal



### Energy Recovery Wheel

- Factory-installed option on Emergence 35- to 50-ton rooftop units
- ARI-certified energy recovery wheel
- Energy recovery wheel is segmented for easy cleaning and removal
- Washable energy transfer segment for long life and sustained effectiveness
- Permanently bonded silica gel desiccant for long life
- UL®-recognized component



CO<sub>2</sub> SENSOR

### Demand Control Ventilation

- Rooftop unit option featuring a carbon dioxide (CO<sub>2</sub>) sensor to estimate occupancy
- Modulates ventilation based on occupancy
- Minimizes energy costs while maintaining air quality
- Compatible with premium units featuring the Prodigy® Control System and an economizer or motorized outdoor air damper
- Compatible with non-Prodigy Control System Lennox® rooftop units with an economizer

## Cleaning



### UVC Germicidal Lamps

- Designed for Emergence® and Landmark® rooftop units; also available in 3- to 20-ton split system air handlers
- Includes complete safety kit
- Reduces concentration of mold, bacteria and fungi on coils
- Helps maintain system heating and cooling efficiency
- Reduces irritants that can affect IAQ
- Available as field-installed kit (factory installation available for Emergence rooftop units)



### MERV Air Filters

- High-efficiency air filters available in MERV 8, 11, 13 and 15
- The highest MERV-rated 2" filter with the lowest energy expense<sup>8</sup> based on ASHRAE 52.2-2007 standard
- Removes 85% of particles sized 0.3 to 1.0 micron
- Exceeds minimum requirements set forth by LEED®
- Conforms to UL900 Class 2 approval for U.S. and Canada
- Improves HVAC energy efficiency by keeping coil clean

Note: Hg-lamps contain mercury. Dispose of properly. Refer to [www.lamprecycle.org](http://www.lamprecycle.org) or call 1-800-9-LENNOX.

The L Connection® Network is a commercial building system that offers advanced control for saving time and

## L Connection® Network

The network manager provides a central point of advanced control

### Network Control Panel

*located in facility manager's office*

- Large screen and four-button control provide a user-friendly interface to HVAC equipment and building functions
- Customized settings with time-of-day scheduling, temperature, CO<sub>2</sub>, ventilation and humidity control
- Date- and time-stamped alarm codes
- Auto-poll start-up feature greatly reduces installation time and expense
- Easily field-upgraded without losing programs or schedules
- Provides a written description of each controller's alarm codes



Controllers connect equipment to the network

### Building Controller

*located in control room or mechanical room*

- Schedule basic building operations such as lights, signs and exhaust fans
- Built-in diagnostics and alarm codes speed troubleshooting



### Prodigy® 2.0 Unit Controller

*intelligent control for the rooftop unit*

- Intelligently engineered to deliver exceptional reliability and diagnostics
- Completely customizable, with more than 250 operating control parameters
- Scalable platform adapts easily to different unit configurations and technologies
- Enhanced user interface has a simple menu design with a four-line text display for fast, accurate unit setup and servicing
- USB port provides the ability to upgrade firmware and download service reports



PRODIGY  
CONTROL SYSTEM

### Network Thermostat Controller

*integrates electromechanically controlled HVAC equipment*

- Monitors and controls Lennox® split systems and rooftop units, as well as electromechanically controlled third-party equipment
- Up to 2-heat, 3-cool capability
- Can be combined with optional bypass controller for constant-volume bypass zoning applications
- Fused outputs and override switches simplify installation testing, setup, and provide added protection



Zone controllers and sensors provide basic control at each zone

### Zone Link

*located in the rooftop unit or mechanical room*

- Coordinates up to 31 Comfort Sensors connected to a zoned rooftop unit
- Counts heating and cooling votes from Comfort Sensors and signals the rooftop unit to change modes according to its configuration
- Can be used to expand L Connection® Network to coordinate up to 93 unit controllers per network



### Comfort Sensor

*located in each zone*

- Temperature sensor with optional relative humidity and/or carbon dioxide sensing capabilities
- Controls zone damper or variable-air-volume terminal box in zoning applications to maintain space temperature and indoor air quality
- Optional LCD user interface with sensor readings and easy temperature adjustment



money. It's the efficient way to manage HVAC and building operations.



# Simple and efficient temperature control

## Prodigy® Control System



Intelligent control in an even smarter package

### Prodigy® 2.0 Unit Controller

- Makes setup, troubleshooting and service easier than ever
- Improved user interface includes:
  - Simple, menu-driven design
  - Four-line text display
  - LED status indicators
- 250+ parameters for customized comfort
- 100+ diagnostic fault codes to detect operating issues
- Help button provides menu specific instructions to simplify navigations
- USB service report assists in making “service versus replacement” decisions

### SmartWire™ System

- Designed to simplify field sensor and thermostat installation
- Keyed and color-coded connectors to help prevent miswiring
- Labeled connections allow quicker installation and troubleshooting



The Lennox Prodigy App provides on-the-go access to technical and troubleshooting resources. Download from the Apple iTunes store or GooglePlay.



## Thermostats



### Commercial Touchscreen Thermostat

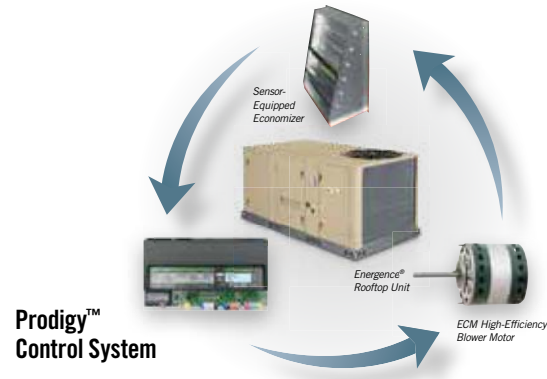
- Designed specifically for commercial applications
- User-friendly touchscreen for effortless temperature control
- Simple operation with sophisticated features and capabilities
- Designed for wall or remote programming
- Seven-day programmable with up to four time periods per day
- Compatible with almost any heating and cooling system with economizer control



### iComfort Wi-Fi® Thermostat

- Easy-to-read touchscreen for quick adjustments
- One-Touch Away mode for operation after hours
- Alerts and reminders for proactive system management
- Remote access for convenient temperature control anytime and anywhere
- Weather data displays with live forecast updates
- Optional Equipment Interface Module (EIM) compatible with most commercial applications





**Prodigy™ Control System**

**BACnet® and LonTalk® Modules**

- Communication using the HVAC industry's most popular open-standard protocols
- Communicates with building automation systems that support the BACnet® Application-Specific Controller device profile or the LonMark® Space Comfort Controller or Discharge Air Controller functional profiles
- A Lennox® zone sensor, a BACnet network zone sensor, BACnet thermostat controller or LonTalk® network zone sensor may be used to send the zone temperature or thermostat demands to the Prodigy® Control System
- Prodigy Control System is BTL-listed and LonMark-certified



**SmartAirflow® System**

- SmartAirflow saves an average of 35% on annual ventilation energy consumption<sup>10</sup>
- Continuously adjusts the economizer dampers to provide precise ventilation per the building's design requirements
- Provides five independent, adjustable-supply airflow settings
- Works with the Prodigy Control System to allow adjustment of airflow settings with a resolution down to 3 CFM
- Compatible with optional BACnet and LonTalk modules to facilitate greater building automation and monitoring



**ComfortSense 3000 Commercial Thermostat**

- Large display and buttons for ease of use and convenience
- Intuitive, advanced electronics for precise control of temperature
- Stylish design complements any interior setting
- Designed specifically for commercial applications
- Week days and weekends programmable with up to four time periods per day



**ComfortSense 3000 Thermostat**

- Large display and buttons for ease of use and convenience
- Intuitive, advanced electronics for precise control of temperature
- Stylish design complements any interior setting

# Advanced engineering software from Lennox will save time, control accuracy

## Engineering tools



### Total Cost of Ownership™ Calculator

- Helps businesses select the best buy in HVAC by weighing costs for equipment, installation, operation, maintenance and financing

### AutoCAD® Templates

- Save time by using existing AutoCAD® features to create a plan or elevation view with all current equipment added

### Revit® Building Information Modeling

- 3D HVAC units with performance information and all field connection details for electrical, gas, duct and condensate
- Equipment schedules for the models also include cooling/heating capacity and electrical loads

### Energy Recovery Ventilators Software

- Calculate supply air conditions, design loads, system capacity saved, effectiveness, annual energy analysis and combined efficiency analysis

## Commercial controls software

### L Connection® Network Control Panel Software

- Schedule, monitor and control the entire L Connection® Network
- Configures alarms to automatically send e-mail notification or page to a facility manager or servicing contractor before problems get out of hand
- Records trends based on over 25 user-selectable data points that can be automatically graphed using Microsoft® Excel
- Generates, saves and prints a variety of reports
- Connects to the network locally, or remotely through a modem, via an Ethernet network or via the Internet<sup>9</sup>

### Unit Controller Software

- Commission, monitor and control unit controllers, including Integrated Modular Controllers
- If used with the L Connection Network, can control Network Thermostat Controllers or Building Controllers
- Connects to the network locally, or remotely through a modem, an Ethernet network or via the Internet<sup>9</sup>

# Endnotes

- <sup>1</sup> Emergence® Ultra-High-Efficiency Models—Claim pertains to 7.5- to 12.5-ton units as listed in the AHRI ratings directory on December 1, 2014.
- <sup>2</sup> SunSource® Commercial Energy System—**Effective efficiency of up to 34 SEER, 43 IEER and beyond.** Effective SEER and IEER estimates for the SunSource air conditioning system are based on the U.S. Department of Energy (DOE) annual performance factor (APF) method for heat pumps and air conditioners (10CFR part 430). Estimates of annual solar energy production are calculated using National Renewable Energy Laboratory's (NREL) PVWatts, calculated at tilt angle 10 degrees with an 180 degree azimuth. Estimates of annual cooling operating cost savings for the rooftop units are calculated using Lennox' Total Cost of Ownership Calculator, with operating hours from 10 am to 10 pm in a small retail environment in the Omaha region. Estimated SEER energy calculations were made using Emergence LGH060H4E (5 ton/17 SEER 3-phase – 460V) and six 275DC W solar modules. IEER effective efficiency calculations were made using Emergence LGH090U4E (7.5 ton/21.5 IEER 3-phase) and seven 275DC W solar modules. Note that SEER and IEER equivalents may vary by location.
- <sup>3</sup> Raider® Rooftop Units—**Save up to \$1,500 on replacement projects.** \$1,500 savings is calculated in replacement jobs where the Raider unit matches the footprint, eliminating the need for an adaptor curb, any plumbing, electrical and/or structural engineering costs.
- <sup>4</sup> Strategos® Rooftop Units—**Among the most energy-efficient rooftop units in the industry.** Claim pertains to 16.8 IEER rating for the SCC240H4M 20 ton unit, based on comparison of publicly available information regarding Integrated Energy Efficiency Ratio (IEER) for single packaged rooftop units, 6 to 25 tons, G/E, E/E or cooling only. Established through internal review of AHRI Certified Ratings, December 2014.
- <sup>5</sup> SLP98V Gas Furnaces—**The quietest high-efficiency furnace you can buy.** Based on sound pressure levels during steady-state, high-fire and low-fire operation of Lennox SLP98VUH070V36B and leading competitive units as of July 2013 at mid-point temperature rise and minimum external static pressure when set up per Section 4.4.4 of AHRI 260-2012. Efficiency ratings established per test standard: ANSI/ASHRAE 103-2007.
- <sup>6</sup> SL280V Gas Furnaces—**The quietest furnace in its class.** Based on sound pressure levels during steady-state, high-fire operation of Lennox SL280UHV070V36A and leading competitive units at mid-point temperature rise and minimum external static pressure when set up per Section 4.5.3 of AHRI 260.
- <sup>7</sup> Humiditrol® dehumidification system—**Removes up to 8 times more moisture than standard rooftop units.** At 65°F, Lennox' Humiditrol dehumidification system removes more than 1.44 gallons of water an hour.
- <sup>8</sup> When considering all 2" filters with MERV 15 ratings at 492 fpm. Claim pertains to Lennox MERV 15 24"x24"x2" filter, which has the lowest pressure at 492 fpm among 2" MERV 15 filters. Claim references the reduced energy expense of running a lower pressure-drop media compared to a filter with a higher pressure drop, while maintaining high particle capture without increasing energy costs associated with fan energy consumption. Established through internal review of comparative literature available to the general public in June 2007.
- <sup>9</sup> Requires access to Ethernet local area network via the Internet.
- <sup>10</sup> SmartAirflow™ System—**Saves an average of 35% on annual ventilation energy consumption.** As compared to uncalibrated parallel-blade-design dampers without the SmartAirflow System on a traditional 4-ton unit delivering 1,600 CFM (cubic feet per minute) of supply airflow with 15% outside air requirements where economizer minimum position is set at 15% damper position. Average of cities in ASHRAE climate zones 1-6. Savings will vary with each zone.

---

Due to Lennox' ongoing commitment to quality, all specifications and ratings are subject to change.

Not all options and accessories listed for each product are available on all models. Contact your Lennox sales representative for details.

For full warranty details, see actual warranty certificate.

ENERGY STAR® qualification—Proper sizing and installation of equipment is critical to achieve optimal performance. Split system air conditioners and heat pumps must be matched with the appropriate coil components to meet ENERGY STAR criteria. Ask your contractor for details, or visit [www.energystar.gov](http://www.energystar.gov).

All trademarks and registered trademarks are the property of their respective owners and are used for identification purposes only.

BACnet is a registered trademark of the American Society of Heating, Refrigeration and Air-Conditioning Engineers (ASHRAE).

LonMark is a registered trademark of the Echelon Corporation.

# Solutions for customized comfort

Don't just choose a Lennox® product—choose a Lennox Commercial Comfort System.

These complete packages of HVAC solutions provide tools to create a healthy and comfortable environment.



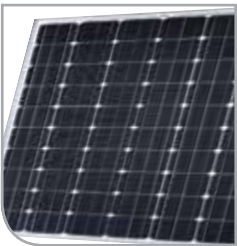
## Packaged Rooftop Units

- Emergence® Rooftop Units
- Strategos® Rooftop Units
- Landmark® Rooftop Units
- Raider® Rooftop Units



## Commercial Controls

- Systems Integration Solutions
- Commercial Thermostats
- L Connection® Network



## Solar Ready

- SunSource® Commercial Energy System



## Indoor Air Quality

- Humiditrol® Dehumidification System
- Demand Control Ventilation
- Air Filters
- UVC Lamps



## Split Systems

- S-Class® Air Conditioners/Heat Pumps
- T-Class™ Air Conditioners/Heat Pumps
- Air Handlers
- Indoor Coils



## Heating

- Unit Heaters
- Duct Furnaces
- Furnaces



*Innovation never felt so good.®*

Visit us at [www.lennox.com](http://www.lennox.com), or contact us at 1-877-726-0024.

© 2015 Lennox Industries Inc.  
For a complete list of the registered and common law trademarks owned by Lennox Industries Inc., please visit [www.lennox.com](http://www.lennox.com).



Litho U.S.A.