

# *Installation Manual*



UL 1978 "Standard for Grease Ducts"; UL 710, "Exhaust Hoods for Commercial Cooking Equipment"; ULC-S647-05 and/or UL197

ENSURE ELECTRICAL SUPPLY CONFORMS WITH ELECTRICAL CHARACTERISTICS SHOWN ON THE RATING PLATE, AND N.E.C. REQUIREMENTS.

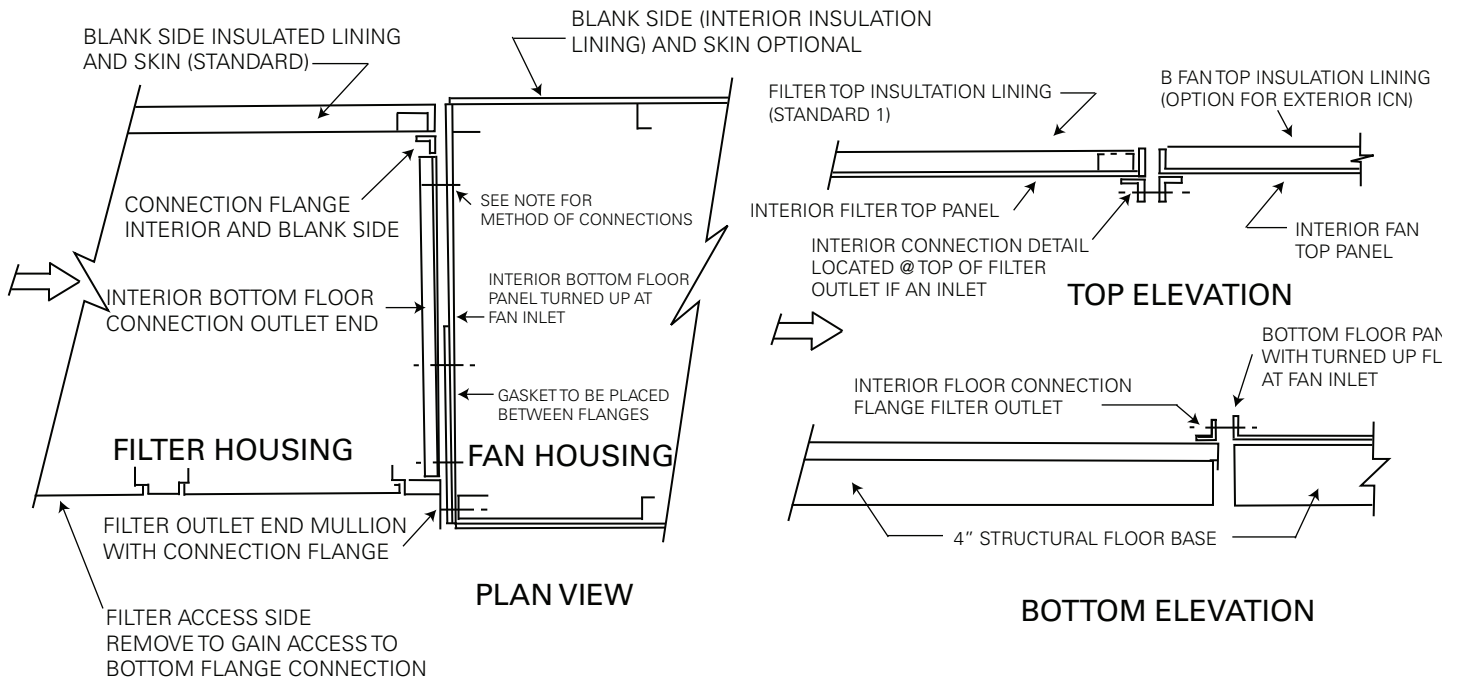
THE INSTALLATION OF THE HOOD AND DUCT WORK LEADING TO AND EXITING THE ECOLOAIR SYSTEM TO BE INSTALLED IN ACCORDANCE WITH NFPA 96 AND LOCAL CODES.

## **EcoloAir Unit**

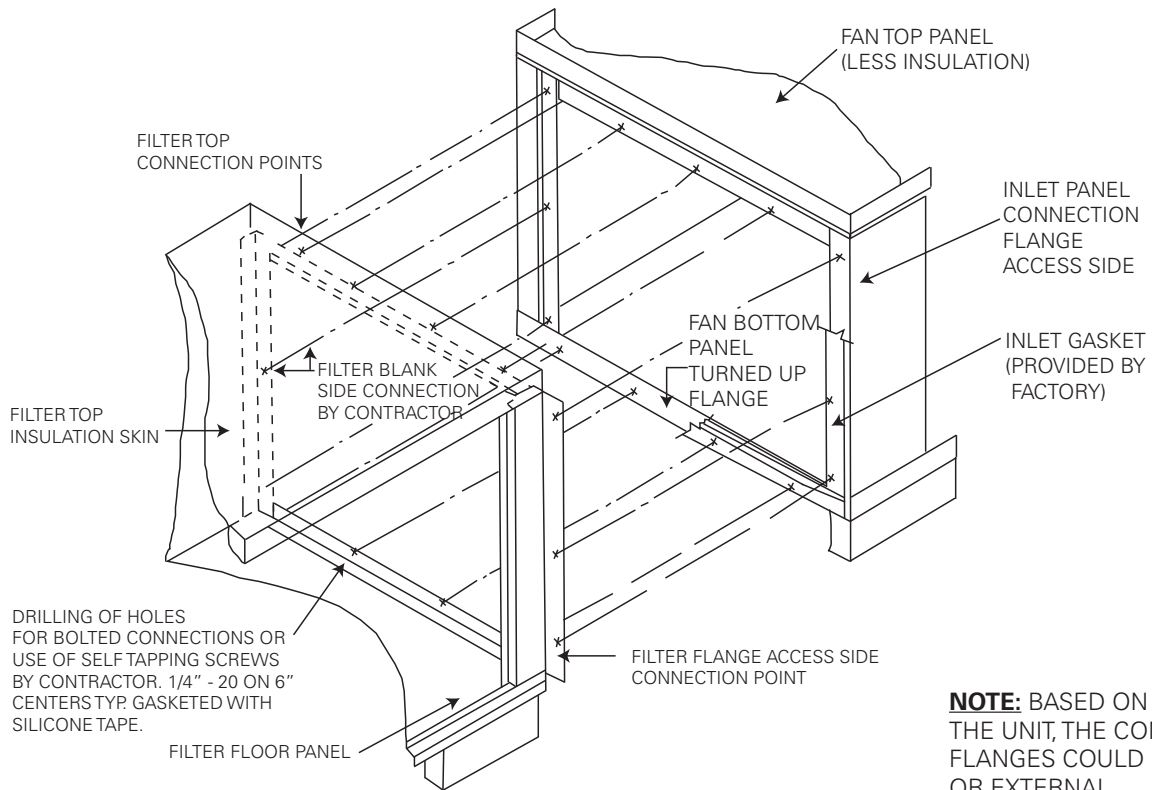
3000CFM, 4000CFM, 5000CFM, 6000CFM, 8000CFM,  
10000CFM, 12000CFM, 15000CFM, 18000CFM,  
20000CFM, 24000CFM, 28000CFM, 32000CFM,  
36000CFM, 40000CFM

**Halton**

**FIGURE 1**  
**FIELD CONNECTION OF FILTER AND FAN MODULES**



**FIGURE 1A**  
**DRAWING FOR: FILTER MODULE TO FAN SECTION OR**  
**FILTER MODULE TO ODOR CONTROL TO FAN SECTION**



**NOTE:** BASED ON THE SIZE OF THE UNIT, THE CONNECTING FLANGES COULD BE INTERNAL OR EXTERNAL.

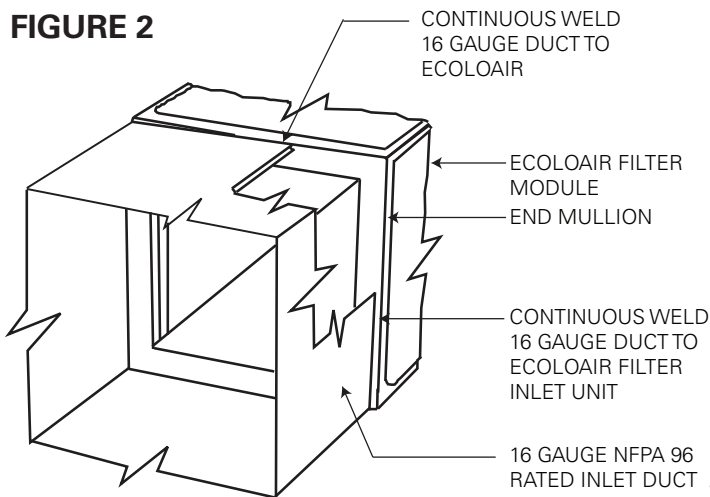
## ELECTRICAL CONNECTIONS

1. Run the main power supply to the control panel and connect to the line voltage terminal block, wire size to be determined by the electrical rating on the panel rating plate and to conform to national electrical standards.
2. The following electrical connections to be made as per wiring diagrams included in installers package.
3. Feed fan motors from the magnetic starter located at the fan module. Fan motors are isolated with three pole disconnect switch, located in the fan compartment.
4. Feed the Water Wash control panel from the 120 volt source in the control panel (if required).
5. Feed the filter pressure switches located at the filter module, firestat and odor control module from the control circuit in the control panel.

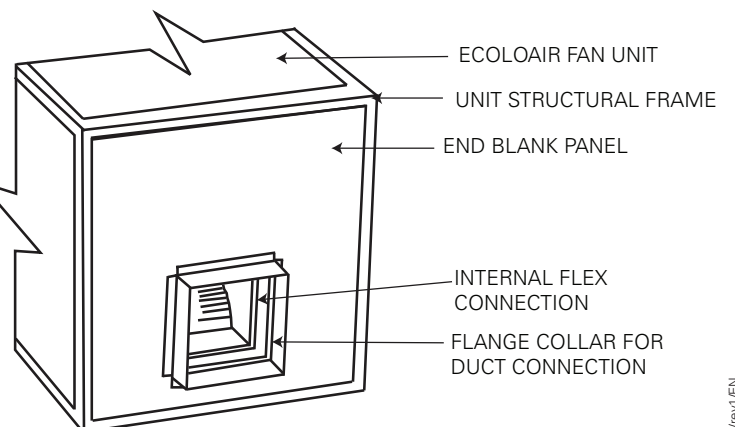
## DUCT CONNECTIONS

1. The exhaust duct connection at the inlet entrance to the EcoloAir system must be continuously welded all around (See figure 2)
2. The duct must be transitioned to the full opening of the filter module inlet.
3. All fan outlet openings to which ducts are attached will be provided with discharge collars (See figure 3).
4. All openings are to be transitioned to the duct size.
5. For filter module connections to the fan module (See figure 1) as per UL listed procedure.

**FIGURE 2**

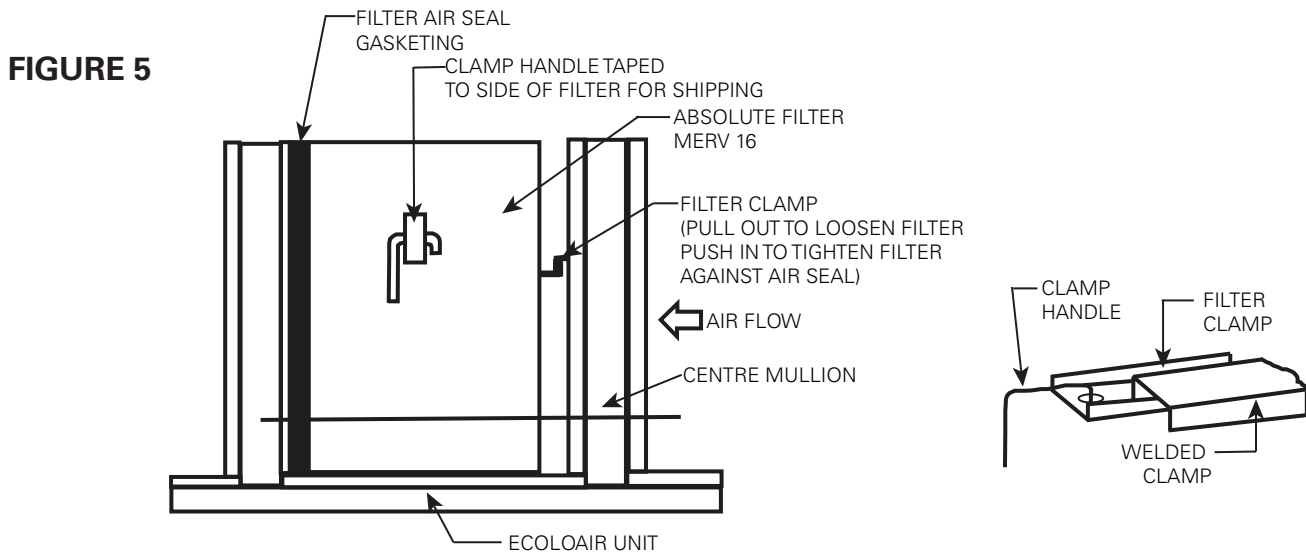
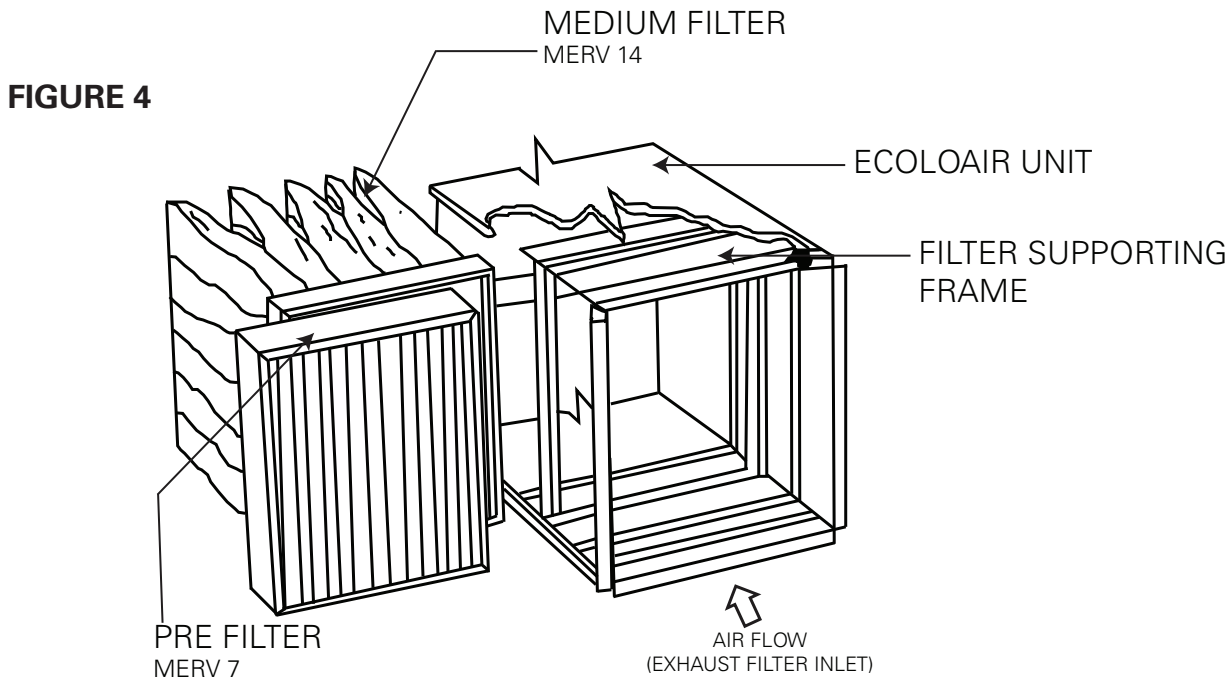


**FIGURE 3**



## AIR FILTER INSTALLATION

1. Care should be taken to install the filters in the proper sequence. They should be installed in the following order:
  - a) Beginning at the exhaust inlet, the first filter (Pre Filter) is the Merv 7
  - b) Next is the filter labelled Medium Filter, Merv 14
  - c) Followed by the filter labelled Absolute Filter, Merv 16
2. All filters should be installed taking note of the arrow indicating the directions of air flow and clamping into position.
3. It is important that all the filters be properly seated against the support mullion as shown in figure 4 and 5.



## ECOLO ODOR CONTROL

To replace a 5 gallon/22 liter bottle of odor solution (“Scentry”)

1. Open enclosure cabinet door by unscrewing the two lock bolts.
2. Screw the cap off the empty bottle/reservoir.
3. Pull the dip tube assembly out of the empty bottle.
4. Remove the empty bottle from the cabinet
5. Refill bottle with concentrate and mix well as per instructions or refill with “ready to use, pre-mixed solution.
6. Place the bottle in the cabinet.
7. Put the dip tube assembly into the new bottle. Make sure the dip tube reaches the bottom of the bottle.
8. Place cap on bottle neck and make one turn. DO NOT TIGHTEN (Option: place low level probe in bottle).
9. Close the cabinet door and lock with locking bolts.

NOTE: The standard EcoloAir unit comes with the Ecolo Odor Control pre-mounted and installed.

## SCHEMATIC WIRING DIAGRAMS

For field wiring diagrams and field connections refer to Halton’s shop drawings shipped with unit or contact factory.

Additional copies of shop drawings are available on request.

## FAN SECTION

### **Important note:**

Before starting the fan unit, remove fan isolator hold down brackets. The brackets are used for shipping purposes only. When the brackets are removed the fan should float freely on the spring isolators.

## START UP NOTICE

The unit is now ready for start-up. The start up and initial check out are to be performed by an “authorized” service agent. If the start-up is performed by someone other than an “authorized” agent the Warranty is null and void.

Halton agent must have a minimum notice of five (5) days to schedule start-up. Should the equipment not be ready for start-up at the specified time any additional expenses incurred will be charged to the dealer who purchased the equipment.

For any questions please contact Halton Service Network at (270) 237-5600 for the U.S. and (905) 624-0301 for Canada.

## HALTON LIMITED WARRANTY

Halton ("Manufacturer"). Warrants only to its direct purchasers and to no others, that all products manufactured by the Manufacturer shall be free from defect in materials and workmanship for a period of twelve (12) months from the date of the original installation and start-up or eighteen (18) months from date of shipment, whichever occurs first. All products sold but not manufactured by Manufacturer will be warranted for a period of twelve (12) months from date of shipment.

For products manufactured by the Manufacturer we agree to pay any reasonable labor costs necessary to repair or replace, at Manufacturers option, defective parts or materials for a period of twelve (12) months from date of original installation and start-up or eighteen (18) months from date of shipment, whichever occurs first. All labor costs subject hereto shall be performed during standard work hours at straight-time rates.

For products sold but not manufactured by the Manufacturer we agree to pay any reasonable labor costs necessary to repair or replace, at Manufacturers option, defective parts or materials for a period of (90) days from date of original installation and start-up or (12) months from date of shipment, whichever occurs first. All labor costs subject hereto shall be performed during standard work hours at straight-time rates.

Purchaser shall pay incurred premium labor charge, including overtime, weekends and holidays. Travel time, service charges, miscellaneous tools, material charges, and labor charges resulting from inaccessibility of equipment will not be paid by Manufacturer.

This **LIMITED WARRANTY SHALL APPLY ONLY** to products that have been installed and maintained in accordance with the installation and Care Instruction Manuals. Purchaser shall be solely responsible for adhering to the instructions and procedures set forth in the said instruction manuals.

This **LIMITED WARRANTY SHALL NOT BE APPLICABLE** to any damage or defect resulting from fire, flood, freezing or any Act of God, abuse, misuse, accident, neglect or failure to adhere to all instructions set forth in the installation and Care Instruction Manuals. Furthermore, this limited warranty shall not apply to any product that has been altered, unless such alteration has been approved in writing by a duly authorized representative of the manufacturer. In no event shall the manufacturer be liable for any loss, expense, personal injury or consequential damage, of any kind or character, as may result from a defect in material, and/or workmanship, however caused.

**EXCEPT AS IS EXPRESSLY SET FORTH IN THIS LIMITED WARRANTY, MANUFACTURER MAKES NO WARRANTY OF MARKETABILITY FOR FITNESS OR ANY PARTICULAR PURPOSE. NEITHER DOES MANUFACTURER MAKE ANY WARRANTY, EXPRESSED OR IMPLIED, WITH RESPECT TO PRODUCTS SOLD BY MANUFACTURER OR AS TO THE USE THEREOF.**

### **Halton Company**

101 Industrial Drive, Scottsville, 42164 USA  
Tel: 270-237-5600 Fax: 270-237-5700  
Website address [www.haltoncompany.com](http://www.haltoncompany.com)

### **Halton Indoor Climate Systems, Ltd.**

1021 Brevik Place, Mississauga, ON L4W 3R7 CANADA  
Tel: 905-624-0301 Fax: 905-624-5547  
Website address [www.haltoncanada.com](http://www.haltoncanada.com)

The logo for Halton, featuring the word "Halton" in a bold, blue, sans-serif font.